



PRODUCTION:

Spring Repertory
March 18, 2009

DMinor Sonata
The Time
Sarasate

VENUE INFORMATION:

**BASS
Performance
HALL**
330 East 4th Street
FORT WORTH, TX 76102

VENUE CONTACT:

Steven P. Truitt
817-810-9295

CLIENT:

Metropolitan Classical Ballet

This is a representation of design concepts only. Tony Tucci takes no responsibility and hereby disclaims liability for any injury resulting from the implementation of these concepts. All work indicated by this drawing must be done in compliance with all applicable federal, state and local fire, safety and electrical codes. The lighting designer and his staff are responsible for visual design of the lighting and are not responsible for structural or electrical accidents resulting in injury or damage. All concepts, ideas, and design elements shown on this drawing and all other documentation or related materials are the property of Tony Tucci and may only be used for this production. The resultant design may not be reproduced without written approval by Tony Tucci.

DIRECTOR:

STAGE MANAGER:

Debbie Barr

TD:

Paul Cathey

HDT:

Steve Truitt

HME:

Richard Barlow

ASSISTANT LD:

Chad R. Jung
Aaron Lentz

MASTER ELECTRICIAN:

Peggy Mitchell

FILE NAME:

MCB Light Plot March 09

Drawn By:

Chad R. Jung
Aaron Lentz

DATE OF DRAWING:

3-10-09

DRAWING:

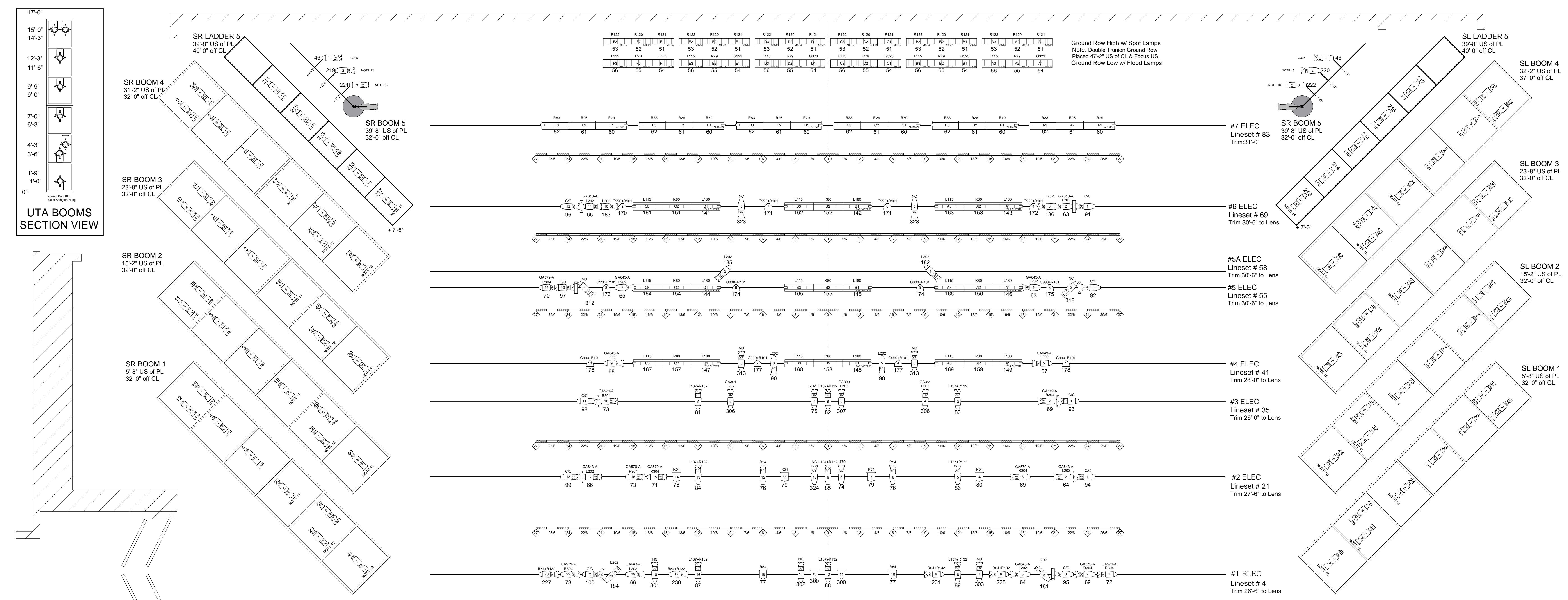
Light Plot

SCALE:

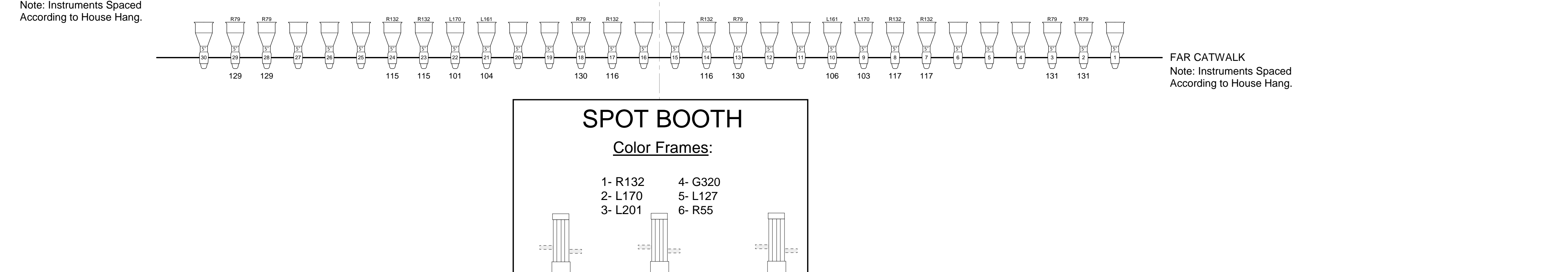
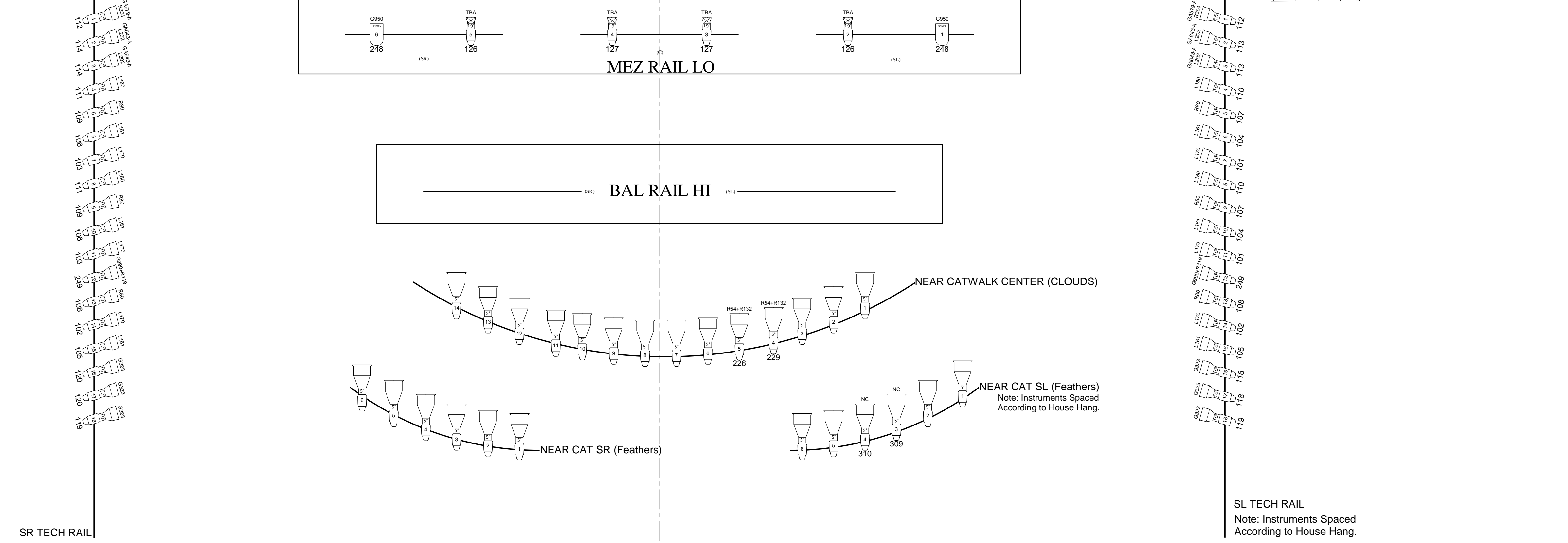
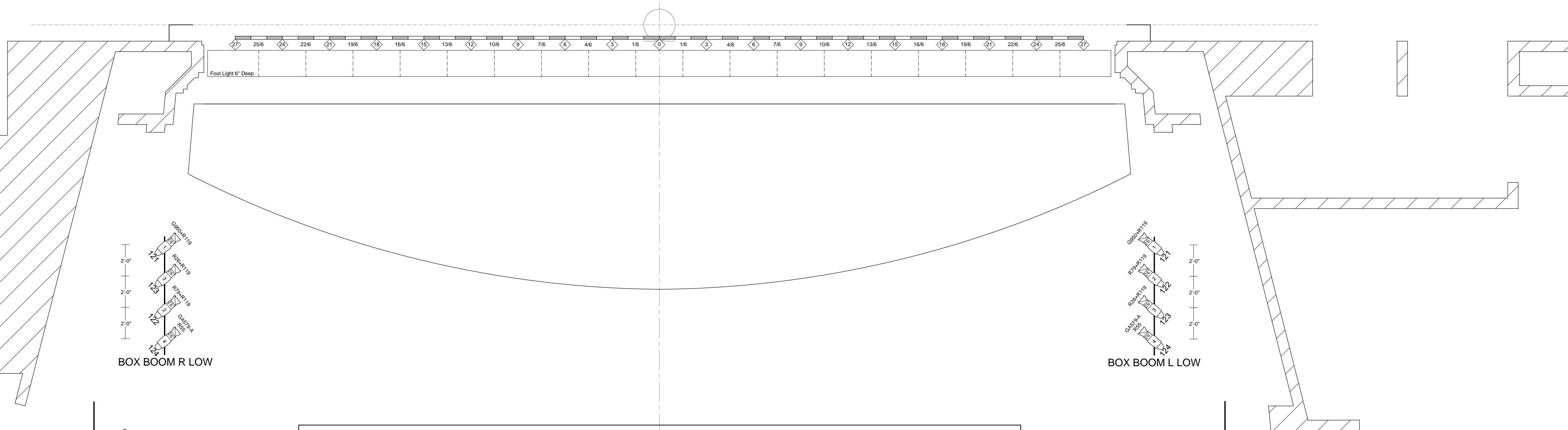
1/4" = 1'-0"

SHEET:

1 OF 1



LINE	PL	BOOM ITEM
1	300	300
2	300	300
3	300	300
4	300	300
5	300	300
6	300	300
7	300	300
8	300	300
9	300	300
10	300	300
11	300	300
12	300	300
13	300	300
14	300	300
15	300	300
16	300	300
17	300	300
18	300	300
19	300	300
20	300	300
21	300	300
22	300	300
23	300	300
24	300	300
25	300	300
26	300	300
27	300	300
28	300	300
29	300	300
30	300	300
31	300	300
32	300	300
33	300	300
34	300	300
35	300	300
36	300	300
37	300	300
38	300	300
39	300	300
40	300	300
41	300	300
42	300	300
43	300	300
44	300	300
45	300	300
46	300	300
47	300	300
48	300	300
49	300	300
50	300	300
51	300	300
52	300	300
53	300	300
54	300	300
55	300	300
56	300	300
57	300	300
58	300	300
59	300	300
60	300	300
61	300	300
62	300	300
63	300	300
64	300	300
65	300	300
66	300	300
67	300	300
68	300	300
69	300	300
70	300	300
71	300	300
72	300	300
73	300	300
74	300	300
75	300	300
76	300	300
77	300	300
78	300	300
79	300	300
80	300	300
81	300	300
82	300	300
83	300	300
84	300	300
85	300	300
86	300	300
87	300	300
88	300	300
89	300	300
90	300	300
91	300	300
92	300	300
93	300	300
94	300	300
95	300	300
96	300	300
97	300	300
98	300	300
99	300	300
100	300	300
101	300	300
102	300	300
103	300	300
104	300	300
105	300	300
106	300	300
107	300	300
108	300	300
109	300	300
110	300	300
111	300	300
112	300	300
113	300	300
114	300	300
115	300	300
116	300	300
117	300	300
118	300	300
119	300	300
120	300	300
121	300	300
122	300	300
123	300	300
124	300	300
125	300	300
126	300	300
127	300	300
128	300	300
129	300	300
130	300	300
131	300	300
132	300	300
133	300	300
134	300	300
135	300	300
136	300	300
137	300	300
138	300	300
139	300	300
140	300	300
141	300	300
142	300	300
143	300	300
144	300	300
145	300	300
146	300	300
147	300	300
148	300	300
149	300	300
150	300	300
151	300	300
152	300	300
153	300	300
154	300	300
155	300	300
156	300	300
157	300	300
158	300	300
159	300	300
160	300	300
161	300	300
162	300	300
163	300	300
164	300	300
165	300	300
166	300	300
167	300	300
168	300	300
169	300	300
170	300	300
171	300	300
172	300	300
173	300	300
174	300	300
175	300	300
176	300	300
177	300	300
178	300	300
179	300	300
180	300	300
181	300	300
182	300	300
183	300	300
184	300	300
185	300	300
186	300	300
187	300	300
188	300	300
189	300	300
190	300	300
191	300	300
192	300	300
193	300	300
194	300	300
195	300	300
196	300	300
197	300	300
198	300	300
199	300	300
200	300	300
201	300	300
202	300	300
203	300	300
204	300	300
205	300	300
206	300	300
207	300	300
208	300	300
209	300	300
210	300	300
211	300	300
212	300	300
213	300	300
214	300	300
215	300	300
216	300	300
217	300	300
218	300	300
219	300	300
220	300	300
221	300	300
222	300	300
223	300	300
224	300	300
225	300	300
226	300	300
227	300	300
228	300	300
229	300	300
230	300	300
231	300	300
232	300	300
233	300	300
234	300	300
235	300	300
236	300	300
237	300	300
238	300	300
239	300	300
240	300	300
241	300	300
242	300	300
243	300	300
244	300	300
245	300	300
246	300	300
247	300	300
248	300	300
249	300	300
250	300	300
251	300	300
252	300	300
253	300	300
254	300	300
255	300	300
256	300	300
257	300	300
258	300	300
259	300	300
260	300	300
261	300	300
262	300	300
263	300	300
264	300	300
265	300	300
266	300	300
267	300	300
268	300	300
269	300	300
270	300	300
271	300	300
272	300	300
273	300	300
274	300	300
275	300	300
276	300	300
277	300	300
278	300	300
279	300	300
280	300	300
281	300	300
282	300	300
283	300	300
284	300	300
285	300	300
286	300	300
287	300	300
288	300	300
289	300	300
290	300	300
291	300	300
292	300	300
293	300	300
294	300	300
295	300	300
296	300	300
297	300	300
298	300	300
299	300	300
300	300	300



HAZE/FOG CH. INFO:
SR off stage DF-50 Ch. 241 Power Ch. 242 Fan
SL off stage LeMaitre Ch. 244 Power Ch. 245 Flow Ch. 246 Fan

GALLERY WORK
Running Lights

Sara Shadow
SR Floor

NOTES:
1) All Pipe & Base Fixtures Should be hung using Sidearms if available.
2) Always Refer to Instrument Schedule and Hookup for Detailed Information.
3) See Lineset Schedule for Boom Placement & Trims.
4) Onstage Works Placed per normal house practice.
5) All Par 56 Strips focus DS.
6) All CYC/MR-16 Strips Focus US.
7) MR-16 Ministrips Set-up Using Double Trunions and Black Masking.
8) See Paperwork for Scroller info.
9) Color Notes
1-NC G990,G180,L118,L158,L106,L126,R56,R79,L116,L124,G780,G320,G110,G848,L20
11-G1013,L192,L179
12-R54,L201,R55
13-L17,R81,G860
14-G1013,L192,L179
15-R54,L201,R55
16-L17,R81,G860